

[View this email in your browser](#)

## EVERETT PTSA COUNCIL 7.3

Proudly serving the PTAs and schools of Everett School District



\*\*\* September 1, 2022 \*\*\*

### ***Everett PTSA Council eBlast***

*If this eBlast does not display in its entirety, be sure to click on "View this email in your browser" at the top of your email.*

**OUR VISION:** To be a meaningful and vital resource to PTAs and our community partners.

**OUR MISSION:** To support, empower, and guide our PTAs to be successful.

\*\*\* [everettptsacouncil.org](http://everettptsacouncil.org) \*\*\*



---

### **IN THIS ISSUE:**

**DATES TO REMEMBER | ANNOUNCEMENTS | MEMBERSHIP  
REFLECTIONS | PROGRAMS | ADVOCACY | FACE/DEI | SHOE FUND  
EPS NEWS | WSPTA NEWS | NPTA NEWS | PTA LEADER TRAININGS**

---



**THURSDAY, SEPTEMBER 15, 2022: Council "Office Hours"**

EVENT TIME: 3:30-4:30 PM

Any and every local PTA leader is invited to join us either in-person at our council office in the CRC or virtually via Zoom for "Office Hours" held on the Third Thursday of each month throughout the 2022-2023 school year! Let us know if you have any PTA questions or concerns, or just let us know how your PTA is doing!

ZOOM LOGIN:

<https://us02web.zoom.us/j/82788053061?pwd=cXczNHBMt0dFbE1GWDA2eIRmeMgzUT09>

Meeting ID: 827 8805 3061 Passcode: Office7.3 Or Call-In: 253-215-8782

**WEDNESDAY, SEPTEMBER 21, 2022: Council Membership Meeting**

LOCATION: This will be a "Hybrid" meeting; either join us in-person at the Community Resource Center ("CRC" / EPS District Facility) in Board Room A, or online using the Zoom link below.

SOCIAL TIME: 6:00-6:30 PM

MEETING TIME: 6:30-7:30 PM

POST-MEETING ACTIVITY: WSPTA-Approved Training: "Roles and Responsibilities of the Board"

FREE LOGIN LINK:

<https://us02web.zoom.us/j/89574715305?pwd=eXVnV0JHd3YrVkpZdm1wRWVxY3gzQT09>

Meeting ID: 895 7471 5305 Passcode: Council73 Or Call-In: 253-215-8782

**FRIDAY, SEPTEMBER 30, 2022: Deadline Date for PTA Standing Rules Approval**

Per Washington State PTA guidelines, each PTA should have its Standing Rules updated if/as needed and approved by that PTA's membership by this date. Typically, this occurs at the first membership meeting of the year.

**WEDNESDAY, OCTOBER 5, 2022: Reflections Training**

EVENT TIME: 7:00-8:30 PM

ZOOM LOGIN:

<https://us02web.zoom.us/j/84341661292?pwd=WFBBSGZGcmZ6Ymk2K2pRNHVXZzA3UT09>

Meeting ID: 843 4166 1292 Passcode: Reflect73 Or Call-In: 253-215-8782

**SATURDAY, OCTOBER 15-16, 2022: Legislative Assembly**

Register on or before September 9, 2022 to receive a discounted

rate: <https://www.wastatepta.org/events-programs/legislative-assembly/>

**MONDAY, OCTOBER 31, 2022: Enroll At Least 25 Members for Current Fiscal Year**

---

Per Washington State requirements, each PTA must have at least 25 members by this date, to be a PTA in Good Standing.

---

## **SPECIAL ANNOUNCEMENTS**

### **Welcome to the 2022-2023 School Year!**

On behalf of Everett PTSA Council 7.3, it is our pleasure to welcome you to the 2022-2023 school year! Together, we have a great opportunity to work with you and welcome many new friends to our PTA family! We look forward to showing support for PTAs, children, families, staff members, and community members throughout the school year.

We recognize that each year has its share of challenges. But with challenges come opportunities. One positive thing you can rely on is PTA. Our council team will continue to look for ways to help all of our local PTAs succeed and be supported if needed. We will continue to advocate for the health, safety, and education of every child. Communication, interaction, and collaboration are more important now than ever.

As some of you might already know, our council was announced as the 2021-2022 Outstanding PTA Council of the Year at the Washington State PTA (WSPTA) Convention in mid-May 2022. This honor was truly unexpected but is definitely appreciated. But this honor would not have been possible without **YOU**. Everyone from our Council Board of Directors to our local PTA leaders to our school & district staff members to the children, families, and community members to our supporters made ALL of the successes possible this past school year. The commitment and dedication of our local PTA leaders motivates our council to put in more effort, and we look forward to accomplishing big things this school year with each of our local PTAs! To be "Outstanding PTA Council of the Year" is not an individual achievement; we share this honor with all of you. For your ongoing support, **THANK YOU**.

We hope that you will have a smooth transition to the 2022-2023 school year. Please feel free to contact us at any time if you have any questions, concerns, or ideas. We look forward to getting to know you and your PTA better throughout the school year and beyond.

Best Regards,

Craig Willis  
President, Everett PTSA Council 7.3  
[everettptsacouncil@gmail.com](mailto:everettptsacouncil@gmail.com)

### **Council Membership Meeting on September 21; You Are Invited!**

Our first Council Membership Meeting of the 2022-2023 school year will be on Wednesday, September 21. Our Board of Directors is excited to announce that this will be our first-ever official "hybrid" meeting; attendees will be able to join either in-person at the Community Resource Center ("CRC" / EPS Headquarters) in Board Room A, or online. In addition to updates from our Committee Chairs, we will be introducing our new Board of Directors and our new district liaison (Cathy Woods), and members in attendance will be voting to approve our Standing Rules and Goals for the 2022-2023 PTA Term. Immediately following the meeting, our council will be hosting a WSPTA-Approved Training, "Roles and Responsibilities of the Board." We hope you each plan to attend this very important meeting and training opportunity!

---

## Everett Public Schools Date Guidelines for PTA Meetings & Events

Everett Public Schools (EPS) has specific date guidelines for when school event nights should occur, depending upon which school level (elementary, middle, high). These date guidelines also apply to PTA meetings and PTA events. When your PTA plans its meetings and events for the 2022-2023 school year, it is important to not only have those dates approved by the school administration but also follow the EPS event night date guidelines.

Please [download the 2022-2023 EPS Designated School Event Night guideline document](#) and review it with your PTA Board for planning purposes.\*

***\*IMPORTANT: Everett PTSA Council 7.3 has scheduled its meetings on the Third Wednesday of each month during the school year. We ask that your PTA please keep that night open from having meetings or events so that your PTA can have members attend our council membership meetings. Our first Council Membership Meeting of the school year will be on September 21 (details listed in "Dates to Remember" section, above). Your support is needed and appreciated!***

---



### Membership Goal 2022-2023

Hello PTA Leaders,

The Everett PTSA Council's **membership goal for 2022-2023 is 4100**, matching the local PTA's target. This school year, we are working to boost membership by emphasizing the importance of joining WSPTA, and raising knowledge of the financial advantages members can obtain by doing so.

- Total number of PTA members in Everett School District is currently 809
  - We are at 20% of our 2022-2023 Council Membership Goal of 4100
  - 11 of 27 local PTAs already have at least 25 members
-



### **Enter Your PTA Committee (Board) Positions in MemberPlanet!**

Please remember to enter your PTA Board positions in the "Committee" section of MemberPlanet, as soon as possible. Then we will be able to use that information to know which PTAs have position needs, and which PTA leaders are not yet setup to receive our Council communications.

### **The Value of PTA, Member Discounts**

PTAs can add new members year-round! Washington State PTA is the oldest and largest volunteer association dedicated to the education, health, welfare, and safety of all children in Washington State. When you join PTA, you support local, state, and national efforts to improve the lives of children and their families. As a bonus benefit, each PTA member is eligible for great local, state, national discounts... including many that might come in useful during Summer! For more information regarding the benefits and discounts associated with PTA membership, please visit the following WSPTA website: <https://www.wastatepta.org/get-involved/member-discounts/>

Be sure to remind your community of the great benefits available to PTA members!

### **“Are You Online?” WSPTA Membership Contest!**

Do you have a working online join link for your PTA? To join this contest, [complete PTA Membership - Online Join Details before September 15](#). Bonus for participation: By completing this form, you will have your PTA's online join link added to the WSPTA website.

**Keeping Membership "On Track":** Have membership equal or greater than 75% of the last year's final membership numbers by September 30.

**"Good Standing" for Membership:** Have 25 members entered and all required officers' information entered in Memberplanet by October 31.

### **Washington State PTA Membership Achievement Awards**

<https://www.wastatepta.org/events-programs/awards/membership/>

**100% PTA Membership:** Enroll at least as many members as there are full-time enrolled students at the school. Applications are due by February 28.

**100% Staff Membership:** PTAs can earn this by enrolling at least as many full or part-time staff members as there are certificated staff members at the school. Applications are due by February 28.

If you have any questions, please reach out to us at [everettptsacouncil@gmail.com](mailto:everettptsacouncil@gmail.com)

Regards,  
Serena Peterson & Beenish Iqbal  
Co-VPs of Membership  
[everettptsacouncil@gmail.com](mailto:everettptsacouncil@gmail.com)



---

## REFLECTIONS



The theme for Reflections for the 2022-2023 academic year is **Show Your Voice!** As we prepare for Fall, **please take a few minutes to email the name and contact information for your Reflections chair to: [everettreflections@gmail.com](mailto:everettreflections@gmail.com)!**

Save the Date for our upcoming Reflections Training:

**WEDNESDAY, OCTOBER 5, 2022: Reflections Training**

EVENT TIME: 7:00-8:30 PM

ZOOM LOGIN:

---

<https://us02web.zoom.us/j/84341661292?pwd=WFBBSGZGcmZ6Ymk2K2pRNHVXZzA3UT09>

Georgina Johns, Reflections Co-Chair  
Cam-Tu Vo, Reflections Co-Chair  
Email: [everettreflections@gmail.com](mailto:everettreflections@gmail.com)

---

## PROGRAMS

Mark your calendars for upcoming Program Deadline Dates:



The graphic features a crumpled paper background. At the top right, it says "Tuesday September 8 12-1pm EST". Below this is a logo with a red square containing a white 'Q', a teal square with a white '&', an orange square with a white 'A', and a green rectangle with the word 'SESSION' in white. Underneath the logo are two dark grey rounded rectangular buttons: the top one says "QUESTION" and the bottom one says "ANSWER". Below the buttons, the text reads "National PTA is hosting a Drop-in Q&A Session on the Fall Grant opportunities." followed by a blue link: <https://pta.zoom.us/meeting/register/tZlkce-rrjMtH92aqXRw3C5M-pDjscRL9Zt2>. At the bottom, it says "Questions...EMAIL: grants@pta.org".

Tuesday, September 8th at 12-1pm EST: National PTA Grant Q & A Session.  
Register here [Meeting Registration - Zoom](#)

Tuesday, September 27th at 5pm EST: National PTA Grant Application Due  
[PTA.org/Grants](#)

Saturday, October 1st: School of Excellence Application Due

**Get Funding to Host PTA Programs!**

---



**Have you heard?**  
**Over \$600K in funding**  
**is available to PTAs!**

▶ Get support to host a PTA program in your community.

National PTA empowering schools

Apply now at [PTA.org/Grants](https://pta.org/grants)

The advertisement features a young girl with glasses and a blue backpack looking at a smartphone. A megaphone icon is positioned near the application link.

National PTA is here to support your efforts of meeting your school community's various needs! **Over \$600K in funding is available** to help your PTA host programs for families in the areas of digital safety, STEM, literacy, healthy lifestyles and the arts.

Funding is available for these specific programs:

- **Family Reading Experience** engages families in fun, interactive activities that teach core reading skills.
- **Healthy Bodies** empowers students and families to maintain an active lifestyle and healthy diet.
- **Healthy Minds** equips students and families with tools to strengthen social and emotional well-being and make mental health a daily priority.
- **PTA Connected** helps students and families find a technology balance by setting healthy limits on device use, digital safety, privacy, and communication and media choices.
- **Reflections** provide opportunities for student recognition and access to the arts, which boosts student confidence and success in the arts and in life.
- **STEM + Families** engages students and families with science, technology, engineering, and math activities that inspire students to pursue careers in growing STEM fields.

By answering only a few questions, your PTA can apply for **\$1,000 or \$2,500** in program funding. No prior grant-writing experience is needed!

PTAs must be in good standing with their state PTA to qualify.

Learn more and apply at [PTA.org/Grants](https://pta.org/grants).

**The deadline to submit applications is September 27.**



National PTA School of Excellence recognition program opens the lines of communication and critical thinking within school communities to make data-driven decisions that yield positive, long-term results. School of Excellence is committed to supporting and recognizing partnerships between local PTAs and schools to enrich the educational experience and overall well-being for all students.

**School of Excellence Enrollment is NOW OPEN!**

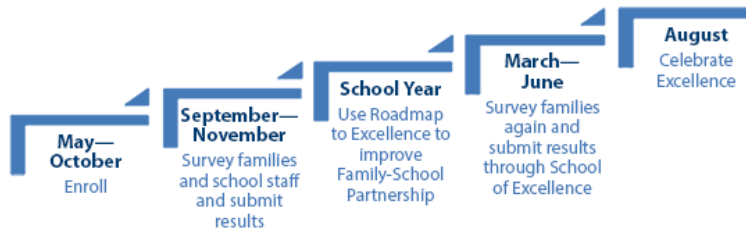
Enrollment for the 2022-2023 program will be open from May 1, 2022 until October 1, 2022.

For more info: [School of Excellence - Programs | National PTA](#)

**Steps to Becoming a National PTA School of Excellence**

---





Questions?  
Please email:  
Margaret McAdams  
Programs Chair  
[alphachio@yahoo.com](mailto:alphachio@yahoo.com)

---

## ADVOCACY

### Kicking Off the Year with Advocacy

School starts in less than a week – are you ready? I’m still looking up school supply lists, so let’s hope you’re more prepared than I am!

### Register for Legislative Assembly

[Registration for Legislative Assembly is open!](#) This year, Legislative Assembly will be a hybrid event, on October 15-16, 2022, including options for voting both in person and virtually. Read [more information about voting](#) on the event website and in the [Voters' Guide](#), available to download on the website.

Remember, this event is where we, as PTA leaders, determine the priorities for WA state’s legislative efforts for the **next two years**. Encourage your members/leaders to sign up to attend and to be voting delegates, to ensure your PTA’s voice is heard!

### NEEDED: Sustainability Chair for Council

Everett PTSA Council is looking for someone interested in being our Sustainability Chair. This is a brand-new position which will focus on helping our council become more green and developing resources for our local PTAs learn more about sustainability in our school communities. Please email me if you are or someone you know may be interested!

I’m excited about the upcoming year and look forward to hearing your voices!

Clarissa Phillips  
[clarissa.phillips@gmail.com](mailto:clarissa.phillips@gmail.com)  
Advocacy Chair

---

**FAMILY & COMMUNITY ENGAGEMENT FACE) /  
DIVERSITY, EQUITY, INCLUSION (DEI)  
What Makes a Strong Engagement Policy?**

---

Ensuring that every child can reach their full potential means investing in meaningful, inclusive, and culturally competent family-school partnerships. By prioritizing policies that uplift the priorities outlined in the National Standards for Family-School Partnerships, PTAs can advance transformative family engagement in their local community and beyond.

What makes family engagement policy meaningful, inclusive and culturally competent? Here are some key characteristics of a strong family engagement policy.

**Model family engagement policies are inclusive of diverse cultural and linguistic practices.**

Supporting the success of *all* students means cultivating meaningful family-school partnerships with families from *all* cultural and linguistic backgrounds.

For example, in Washington, state legislation implemented language access programs in schools so that family engagement resources could be accessible in diverse languages. The commitment to providing inclusive and culturally responsive resources to families in Washington's statewide policy allows for language barriers to be broken down and increases the capacity for every child to reach their fullest potential.

For more info: <https://onevoice.pta.org/category/urban-family-engagement/>

**Everett PTSA Council 7.3 - Grant Opportunity for Local PTAs**

Everett PTSA Council now [offers grants up to \\$150 to support local Everett PTAs](#) in outreach and collaboration with families and community members who are traditionally underrepresented in PTA. Grants are available for hosting a FACE event, where family & community engagement is a primary goal & outreach efforts to diverse school populations are being utilized.

Download our [Everett PTSA Council F.A.C.E Grant Application Packet](#).

Visit F.A.C.E/DEI page for more information and resources:

<http://www.everettsacouncil.org/family-and-community-engagement-facedei.html>

For more information, email:

Jenn Lyons

Everett PTSA Council FACE/DEI Chair

[everettcouncilface@gmail.com](mailto:everettcouncilface@gmail.com)

---

## SHOE FUND

Thank you to our local PTA/PTSA's who continue to support students in need by supporting our shoe fund. Your support enables Everett PTSA Council to distribute shoes to our elementary students and gift cards to our middle and high school students to purchase shoes on their own. Last year, we were able to serve over 240 students at 14 schools throughout Everett Public Schools!

The need was greater than ever before and because of your generous donations, we had the resources to help many students! We are looking forward to serving students again this year, and appreciate your ongoing support! If you have any questions about the Shoe Fund program, please email: [everettcouncilshoefund@gmail.com](mailto:everettcouncilshoefund@gmail.com)

---

With gratitude,

Michelle Thomas  
2022-2023 Shoe Fund Coordinator

---

## EVERETT PUBLIC SCHOOLS (EPS) NEWS

### Stay Connected!

Communication with our families and our community is important to Everett Public Schools. The communication methods on the school district's "Stay Connected" chart are the official means of communication from the district. Please note, items highlighted in **orange** are go-to places during emergencies or when communicating important information. [Click here to either view or download the document](#), and find out the various ways to stay connected with the news, activities, and events of Everett Public Schools.



---

## WASHINGTON STATE PTA NEWS

### Preparing for the 2022-2023 Academic Year



Happy Fall! As you prepare for a new academic year, we invite your team to review the [September checklist for running your PTA](#).

While you are planning your year, take advantage of tools available to all PTA leaders on the [WSPTA site](#). You will need a login and password to access these tools.

### Update Your 2022-2023 Officers in MemberPlanet

Updating your officers in MemberPlanet needs to be completed each year. If your PTA's MemberPlanet administrator has not already done so, your MemberPlanet administrator can enter this year's officers by clicking Committees, and then click the box for Upcoming Term. Click the green plus next to the position. That will bring up your membership roster, click the blue assign role button for the correct name for that role, and

---

then click continue. [Click here for a quick video on entering 2022-2023 Board & Officers.](#)



## NATIONAL PTA NEWS

**PTA**  
everychild.one voice.

**YOU BELONG IN PTA**

Our PTA Creates Connections.

**Join our PTA to...**

- Build powerful relationships
- Access important school resources
- Strengthen the village that helps raise your child

National PTA<sup>®</sup> is the oldest and largest child advocacy association in America. For 125 years, PTA has worked with school communities and decision-makers to solve the toughest problems in our nation's history. Join us as we [celebrate the mission and work of PTA](#) and plan for the future.

PTA is a network of millions of families, students, teachers, administrators, and business and community leaders devoted to the educational success of children and the promotion of family engagement in schools.

PTA is a registered 501(c)(3) nonprofit association that prides itself on being a powerful voice for all children, a relevant resource for families and communities, and a strong advocate for public education. Membership in PTA is open to anyone who supports the [PTA mission](#) and wants to be involved and make a difference for the education, health, and welfare of children and youth.

Find out why you should [join PTA](#) and the great benefits you get as a result of being a member. You can also [donate to National PTA](#).



National PTA provides engaging, educational, and fun programs that have been proven to build the knowledge, skills, and habits that children need to realize their full potential. For more information: <https://www.pta.org/home/programs>

---

## PTA LEADER TRAININGS

Open to all Local PTA/PTSA BOD and Officers!

Training opportunities can be found on the Training webpage of our Council website: <http://www.everettsptacouncil.org/training.html>

### WSPTA eLearning Options:

Check out the PTA Leaders: Training webpage for a growing list of eLearning options for all members! Options included: Nominating Committee, Effective Meetings, Secretary: More than Just Minutes, Treasurer Basics, and Bank Statement Review.

[WSPTA Training webpage](#)

### National PTA eLearning Options:

National PTA offers a wide variety of eLearning options for local PTA leaders and all active members. They are FREE and a great supplement to our local offerings!

Go to: <https://member.pta.org/Shop/Local-Leader-eLearning-Courses>

### eLearning Options in Spanish!

National PTA also offers 5 eLearning options for our Spanish-speaking leaders. Check them out at:

<https://member.pta.org/Shop/eLearning-Courses-En-Espanol>

---



"Our Children" is an online magazine for parents published by the National PTA. Today's PTA is dedicated to empowering parents to make a difference in the education, health, and safety of America's children.

<https://ptaourchildren.org/>





---

## Everett PTSA Council - CONTACT INFORMATION

### 2022-2023 Everett PTSA Council Officers

**President-**[Craig Willis](#)

**VP of Membership-**[Serena Peterson](#), [Beenish Iqbal](#)

**Treasurer-**[Mee Yoke McGuire](#)

**Secretary-**[Amber Ortega](#)

### Board of Directors

**Advocacy-**[Clarissa Phillips](#)

**Communications-**[Lisa Syravong](#)

**Family and Community Engagement (FACE) / DEI -** [Jenn Lyons](#)

**Programs-**[Margaret McAdams](#)

**Reflections-**[Georgina Johns](#), [Cam-Tu Vo](#)

**Shoe Fund-**[Michelle Thomas](#)

**Special Education PTSA Liaison-** [Jason Diamanti](#)

**Member at Large (North/1st Region)-**[Heather Rodriguez](#)

**Member at Large (South/2nd Region)-**[Nicole McKnight](#)

**Region 7 Representative-**[Valerie Cunningham](#)

### Ad Hoc Committee Chairs

**Recognition/Award Celebration-OPEN** ([everettcouncilbanquet@gmail.com](mailto:everettcouncilbanquet@gmail.com))

Are you interested in joining our team or would like to learn more about what we do? Please email us: [everettptsacouncil@gmail.com](mailto:everettptsacouncil@gmail.com)

For more information or further assistance, please refer to the Council Contact list in this eBlast and also posted on our [website](#).

---

*Copyright © 2022 Everett PTSA Council 7.3, All rights reserved.*

Want to change how you receive these emails?  
You can [update your preferences](#) or [unsubscribe from this list](#).

